

Note:

1. The Back Stroke Set contains a complete set of poles, flags and Deck Hole Anchors.
2. The set is supplied with sufficient Deck Hole Anchors for installation.
3. Poles and Deck Hole anchors are made from Stainless Steel 316, The top casting of the pole are made form Fibre Glass.



PROPRIETARY AND CONFIDENTIAL
The information contained in this drawing is the sole property of ANTI WAVE, any reproduction in part or as a whole without the written permission of ANTI WAVE is prohibited.

Project Name:

Back Stroke False Start

Product Name:

Back Stroke set

Project No. AWE00710

Drawn Date 2006-10-11

Revise Date

Product No. 01

Verify Date 2006-10-11

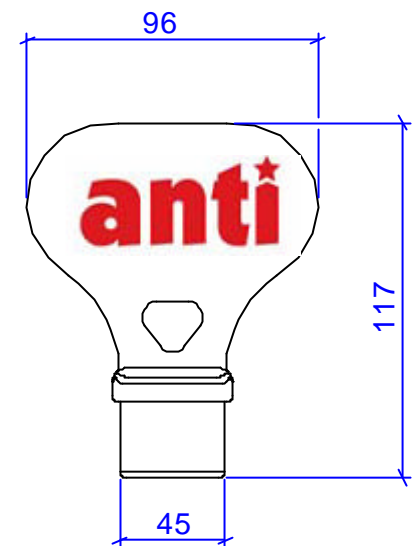
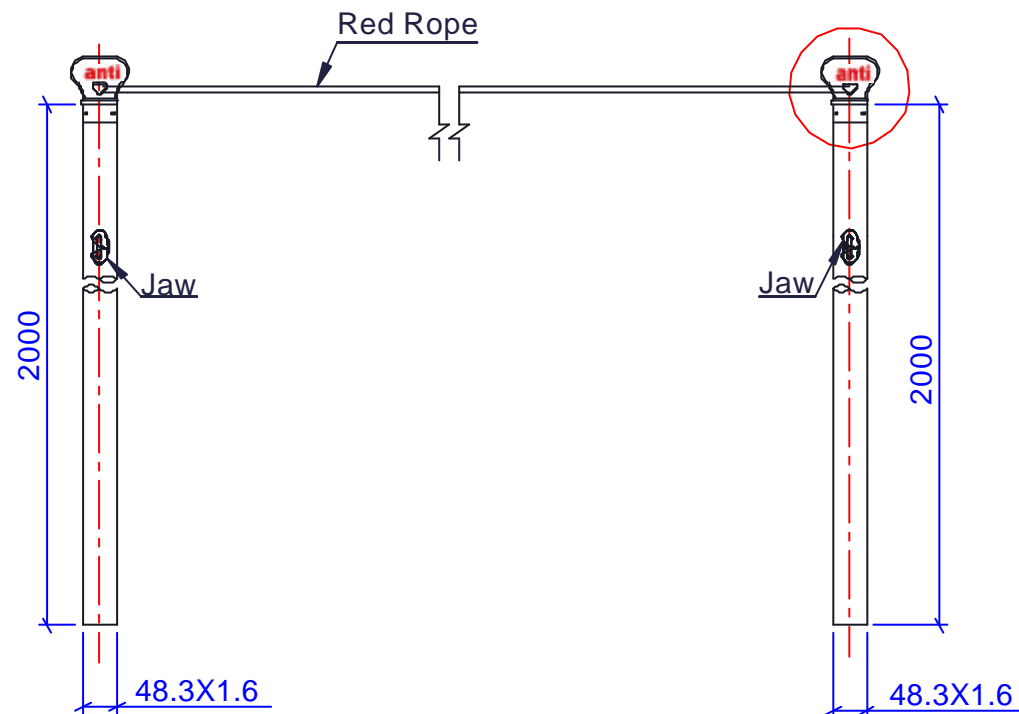
Verify Date

Drawn Philip

Scale No

Patent

4048677



Note:

1. The False Start Set contains a complete set of Poles with Jaws, Red Rope and Deck Hole Anchors.
2. The set is supplied with sufficient Deck Hole Anchors for installation.
3. Poles and Deck Hole anchors are made from Stainless Steel 316, The top casting of the pole are made from Fibre Glass.



PROPRIETARY AND CONFIDENTIAL
The information contained in this drawing is the sole property of ANTI WAVE, any reproduction in part or as a whole without the written permission of ANTI WAVE is prohibited.

Project Name:

Back Stroke False Start

Drawn

Philip

Scale

No

Product Name:

False Start Set

Patent

4048677

Project No.

AWE00710

Drawn Date

2006-10-11

Revise Date

Product No.

02

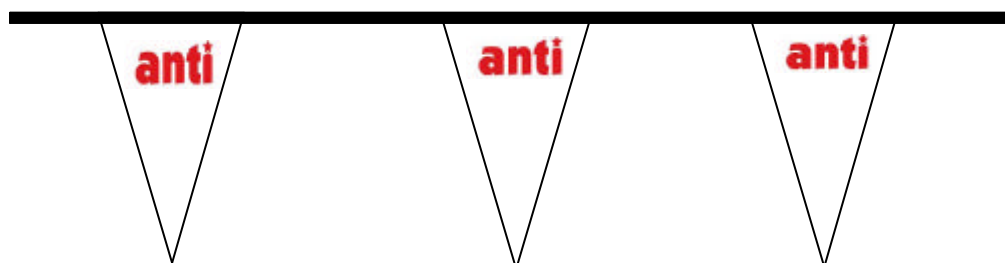
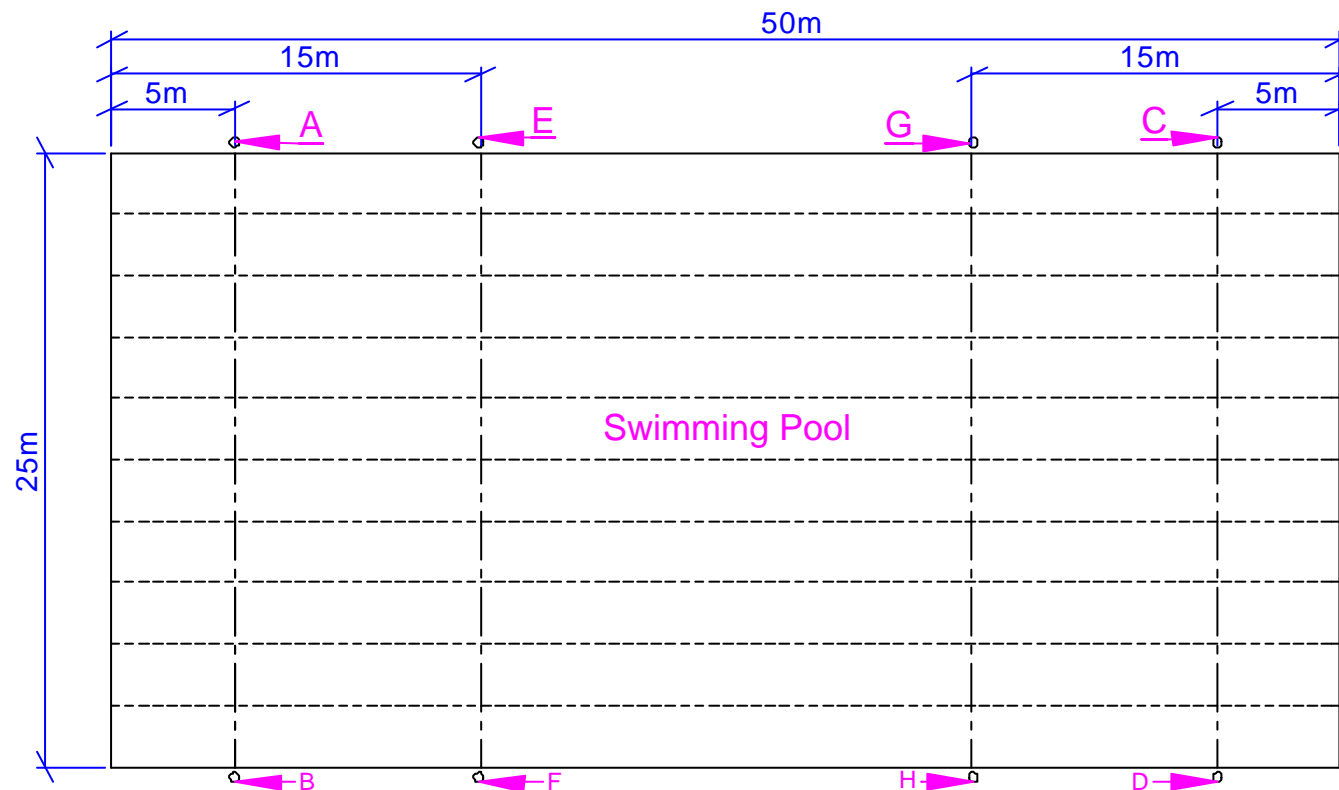
Verify Date

2006-10-11

Verify Date

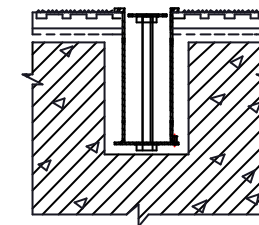
Backstroke-False Start Assembly Instructions

General Sketch



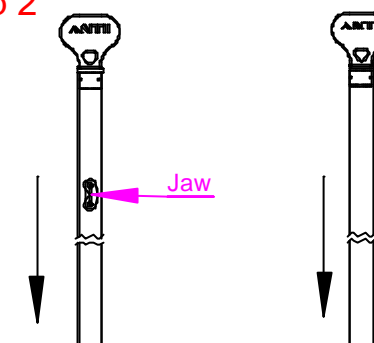
No.	Name	Qty
1	Deck Hole Anchor	8
2	SUS Pole with Jaw	4
3	SUS Pole	4
4	Flag	2
5	Red Rope	2

Step 1



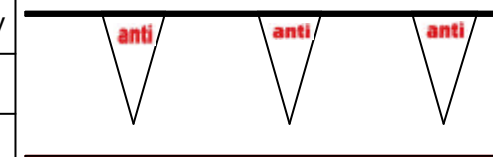
Install the Deck Hole Anchors in the A,B,C, D,E,F,G, H(the distance between the pool edge is 400mm),then wait on week before stressing them.

Step 2



Insert the SUS Poles in Deck Hole Anchor A,B,C and D , insert the SUS Poles with Jaw in the Deck Hole Anchor E, F, G and H.

Step 3



Tie Flags to the top Casting of SUS Poles A and B, C and D, tie the Red Rope to the top Casting of SUS Poles E and F, G and H.



PROPRIETARY AND CONFIDENTIAL
The information contained in this drawing is the sole property of ANTI WAVE, any reproduction in part or as a whole without the written permission of ANTI WAVE is prohibited.

Project Name:

Back Stroke False Start

Product Name:

Installation Instruction

Project No. AWE00710

Product No. 01

Drawn Date 2006-10-11

Verify Date 2006-10-11

Revise Date

Verify Date

Drawn Philip

Scale No

Patent 4048677