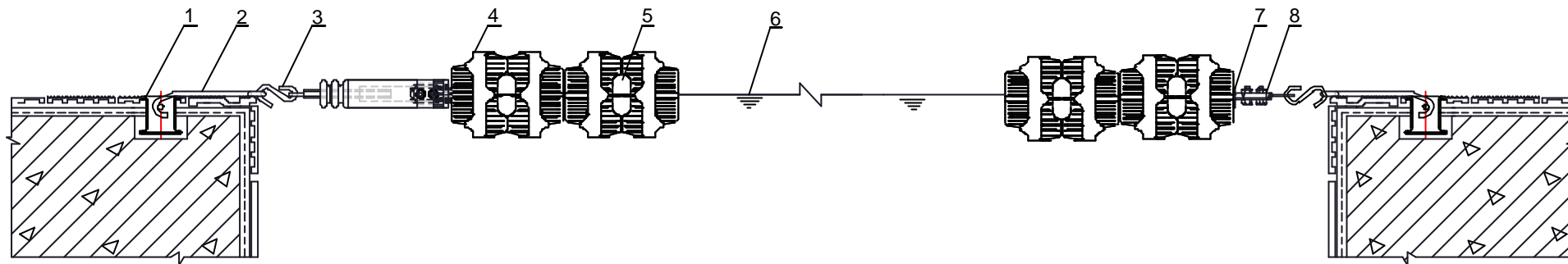


Anti Wave Swimming Lane

Open Drawing



Item No.	Parts Name	Quantity
1	Lane Anchor	2
2	Long Hook	2
3	Super Tensioner	1
4	Disc(Midi 110mm or Maxi 150mm)	As many as the length of the Pool
5	Float/Donut	As many as the length of the Pool
6	3.1mm SS316 Cable	3m longer than the length of the Lane
7	Small Washer	2
8	Long Clamp	1



PROPRIETARY AND CONFIDENTIAL

The information contained in this drawing is the sole property of ANTI WAVE, any reproduction in part or as a whole without the written permission of ANTI WAVE is prohibited.

Project Name:

Swimming Lane

Product Name:

Swimming Lane

Project No. AWE00130

Product No. 01

Drawn Date 2007-04-26

Verify Date

Drawn

Philip

Scale

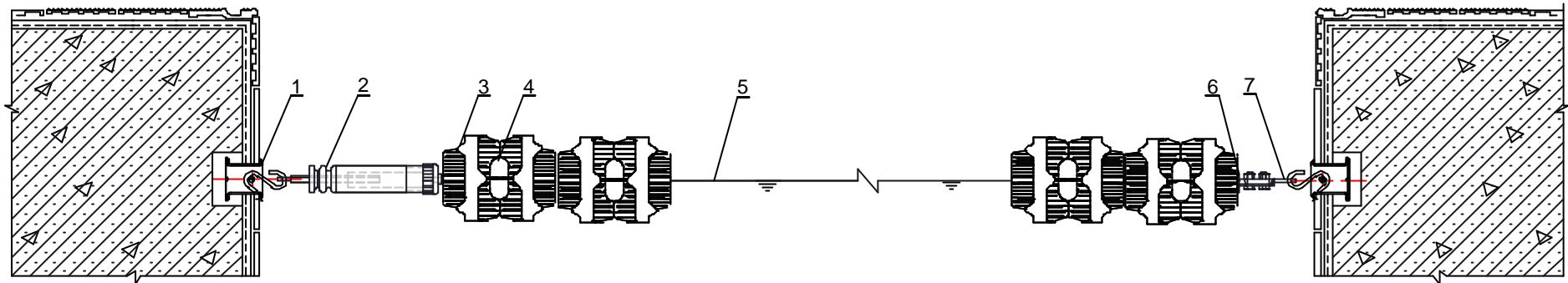
No

Patents

2001285610;7100219;4048677;01818714.5 & 2003/2920 e.g.

Anti Wave Swimming Lane

Open Drawing



Item No.	Parts Name	Quantity
1	Lane Anchor	2
2	Super Tensioner	1
3	Disc(Midi 110mm or Maxi 150mm)	As many as the length of the Pool
4	Float/Donut	As many as the length of the Pool
5	3.1mm SS316 Cable	3m longer than the Lane you order
6	Small Washer	2
7	Long Clamp	1

antiTM

PROPRIETARY AND CONFIDENTIAL

The information contained in this drawing is the sole property of ANTI WAVE, any reproduction in part or as a whole without the written permission of ANTI WAVE is prohibited.

Project Name:
Swimming Lane

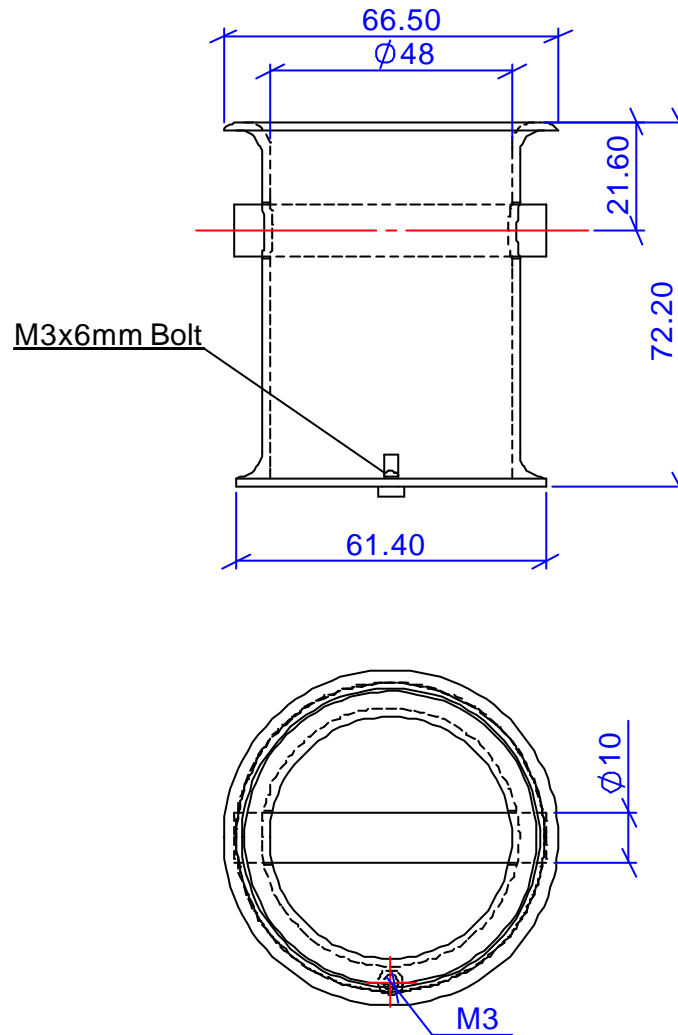
Product Name:
Swimming Lane

Project No.	AWE00130	Product No.	02
Drawn Date	2007-04-26	Verify Date	

Drawn	Philip	Scale	No	Patents	2001285610;7100219;4048677;01818714.5 & 2003/2920 e.g.
-------	--------	-------	----	---------	--

Anti Wave Swimming Lane

Open Drawing



Note:

1. The material of the Anchor is Stainless steel 316.

anti

PROPRIETARY AND CONFIDENTIAL

The information contained in this drawing is the sole property of ANTI WAVE, any reproduction in part or as a whole without the written permission of ANTI WAVE is prohibited.

©ANTI WAVE 2007

Project Name:

Swimming Lane

Product Name:

Lane Anchor

Project No. AWE00130

Product No. 03

Drawn Date 2007-04-26

Verify Date

Drawn Philip

Scale

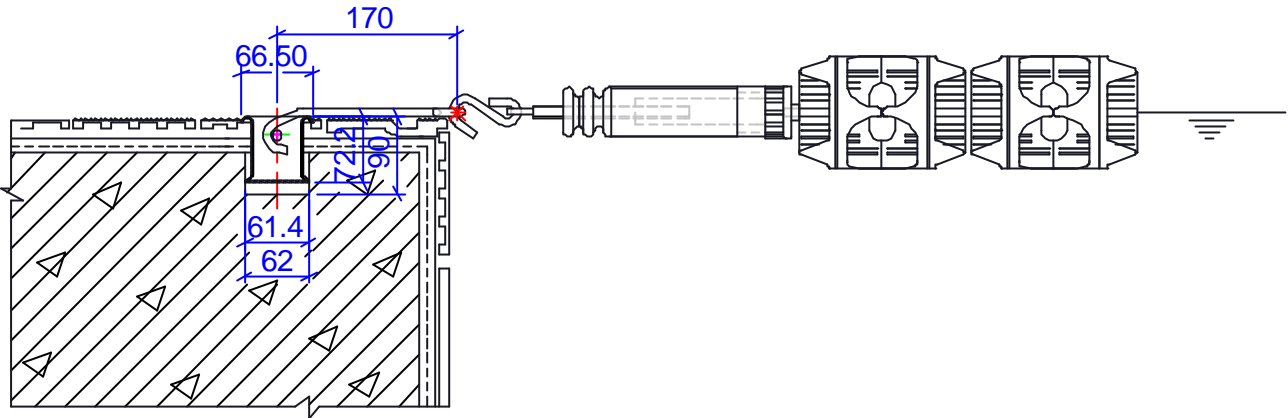
No

Patents

2001285610;7100219;4048677;01818714.5 & 2003/2920 e.g.

Anti Wave Swimming Lane

Open Drawing



Note:

1. Core drill a hole which is 62mm wide and 90mm deep.
2. Chisel out the back of the hole to a wedge-shaped profile as shown, using a small jack hammer drill.
3. Tape up around the edge of the hole with duct tape to minimise mess.
4. Make a firm stiff mix of 2-part vertical application epoxy (enough for two holes at a time). You may wish to add a little fine sand to the mix.
5. Coat the inside of the hole and the back of the anchor; use more than you need.
6. Push the anchor in and turn to seat correctly. Reuse the excess mixture which oozes from the hole to start the next anchor.
7. Clean up and allow one week before stressing the anchor.



PROPRIETARY AND CONFIDENTIAL
The information contained in this drawing is the sole property of ANTI WAVE, any reproduction in part or as a whole without the written permission of ANTI WAVE is prohibited.

Project Name:				Product Name:		Project No.	AWE00130	Product No.	04
Swimming Lane				Lane Anchor Installation		Drawn Date	2007-04-26	Verify Date	
Drawn	Philip	Scale	No	Patents	2001285610; 7100219; 4048677; 01818714.5 & 2003/2920 e.g.				

Open Drawing



- anti**
- TM
- 

PROPRIETARY AND CONFIDENTIAL
The information contained in this drawing is the sole property of ANTI WAVE, any reproduction in part or as a whole without the written permission of ANTI WAVE is prohibited.

Swimming Lane

Lane Anchor Installation

2007-04-26

05

6 | Verify Date

Drawn

Philip

Scale

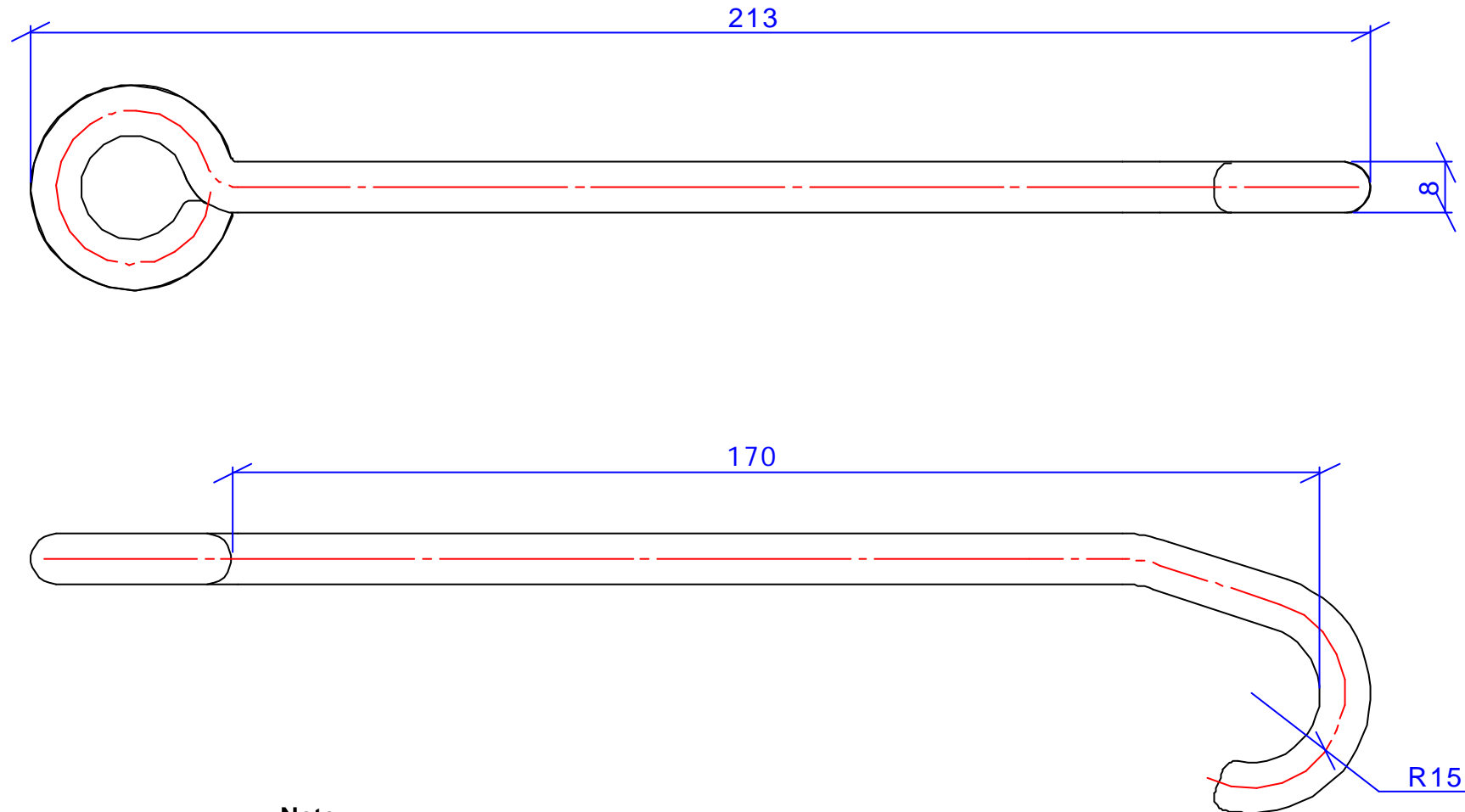
No

Patents

2001285610; 7100219; 4048677; 01818714.5 & 2003/2920 e.g.

Anti Wave Swimming Lane

Open Drawing



Note:

1. The material of the Long Hook is Stainless steel 316.

antiTM

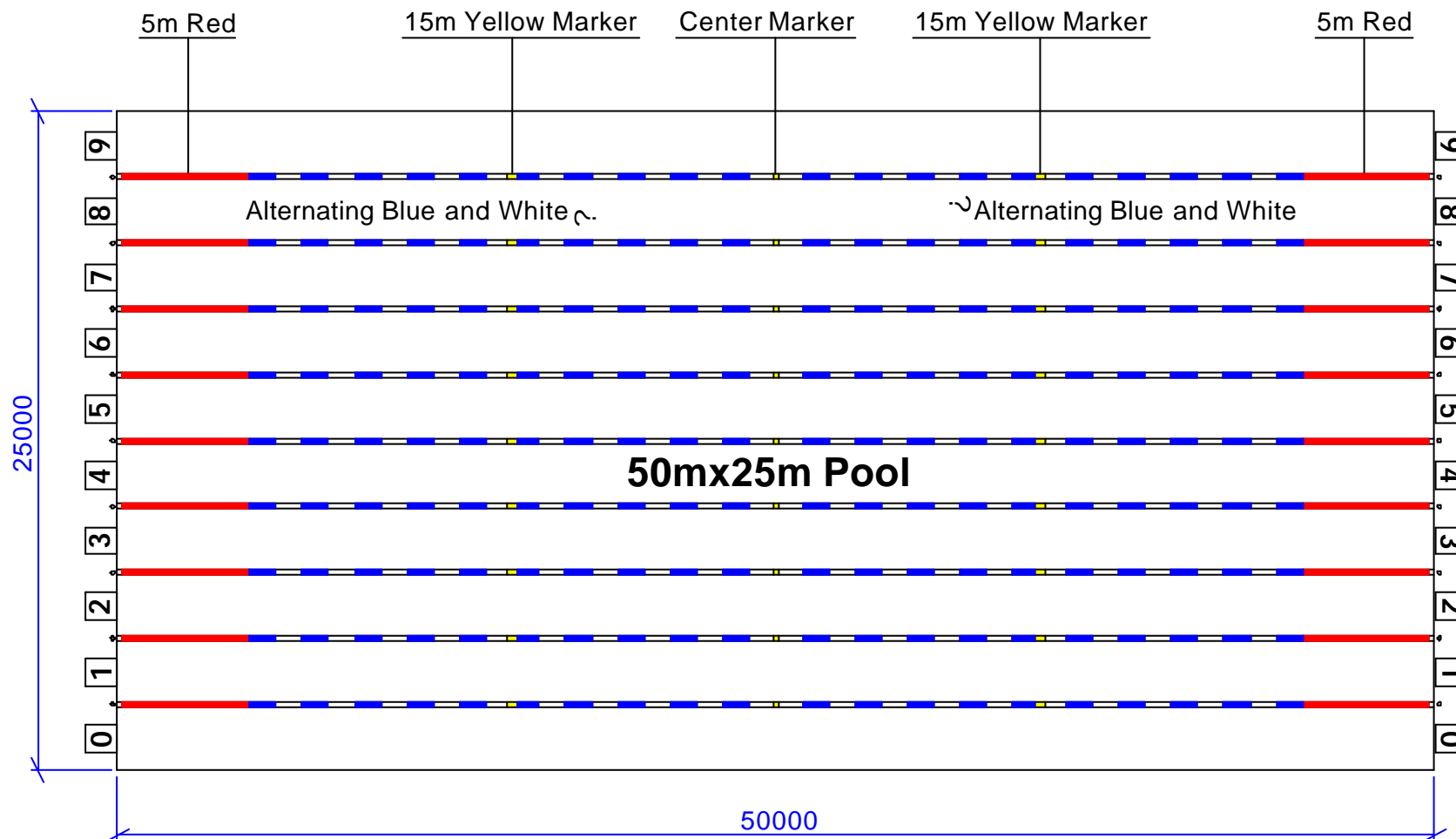
PROPRIETARY AND CONFIDENTIAL
The information contained in this drawing is the sole property of ANTI WAVE, any reproduction in part or as a whole without the written permission of ANTI WAVE is prohibited.

Project Name:				Product Name:		Project No.	AWE00130	Product No.	06
Swimming Lane				Long Hook		Drawn Date	2007-04-26	Verify Date	
Drawn	Philip	Scale	No	Patents	2001285610; 7100219; 4048677; 01818714.5 & 2003/2920 e.g.				

©ANTI WAVE 2007

Anti Wave Swimming Lane

Open Drawing



Anti Wave standard color for 50m Training Pool



PROPRIETARY AND CONFIDENTIAL

The information contained in this drawing is the sole property of ANTI WAVE, any reproduction in part or as a whole without the written permission of ANTI WAVE is prohibited.

Project Name:

Swimming Lane

Product Name:

Standard Color for
50m Training Pool

Project No.

AWE00130

Product No.

07

Drawn Date

2007-04-26

Verify Date

©ANTI WAVE 2007

Drawn

Philip

Scale

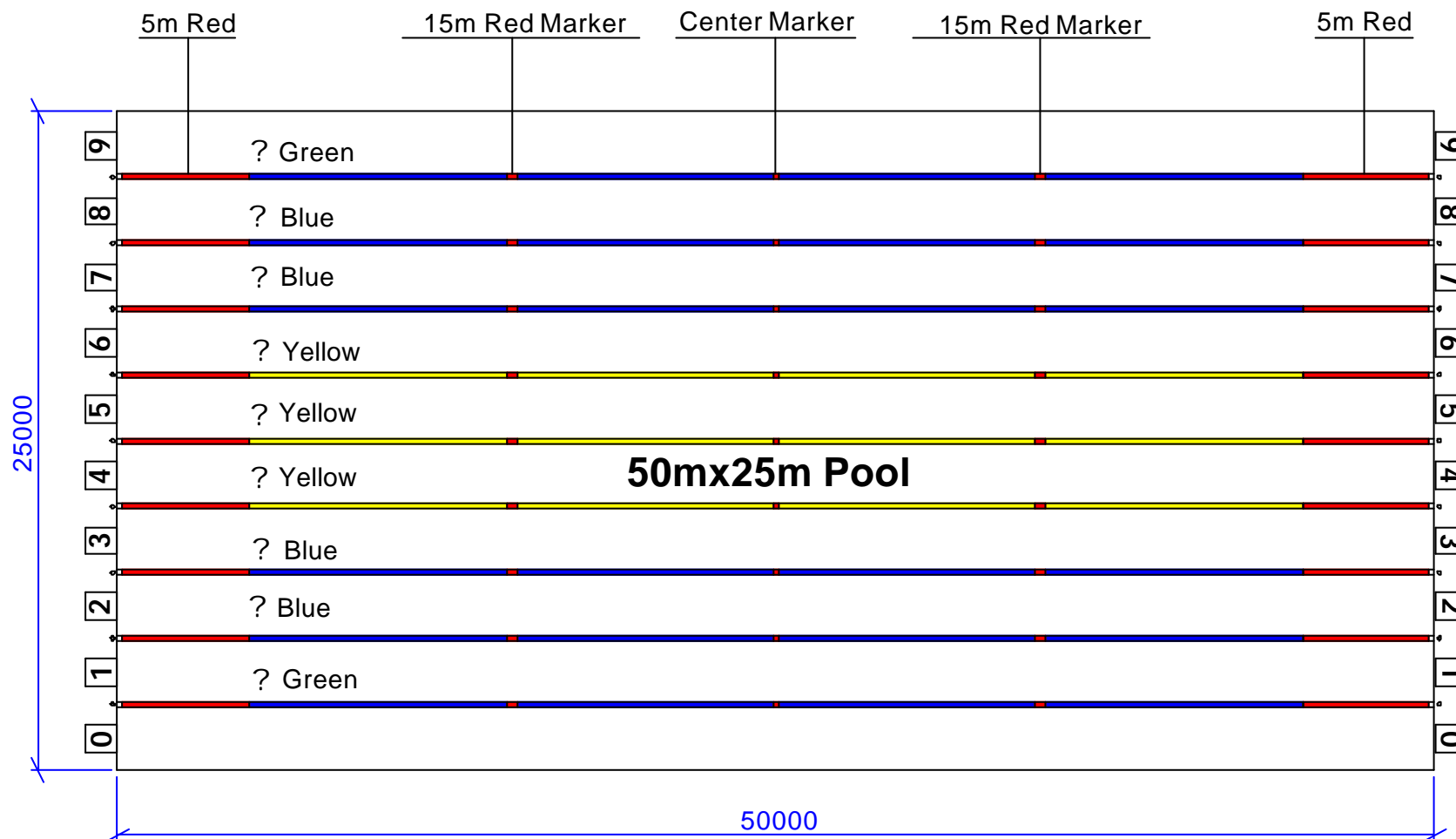
No

Patents

2001285610;7100219;4048677;01818714.5 & 2003/2920 e.g.

Anti Wave Swimming Lane

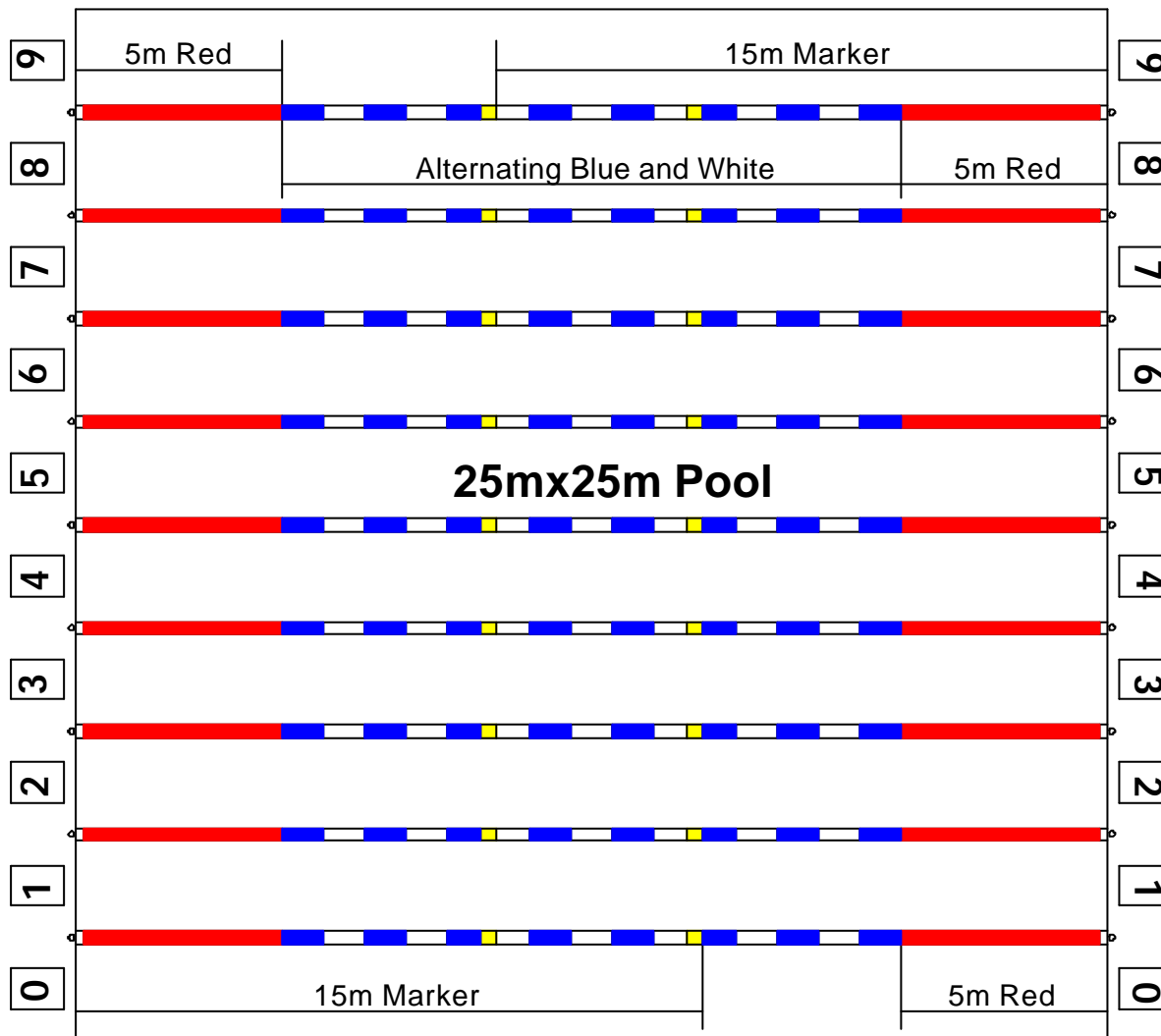
Open Drawing



Anti Wave standard color for 50m Fina Pool

Anti Wave Swimming Lane

Open Drawing



Anti Wave Standard Color for 25m Training Pool



PROPRIETARY AND CONFIDENTIAL
The information contained in this drawing is the sole property of ANTI WAVE, any reproduction in part or as a whole without the written permission of ANTI WAVE is prohibited.

Project Name:
Swimming Lane

Product Name:
Standard Color for
25m Training Pool

Project No. AWE00130

Product No. 09

Drawn Date 2007-04-26

Verify Date

Drawn Philip

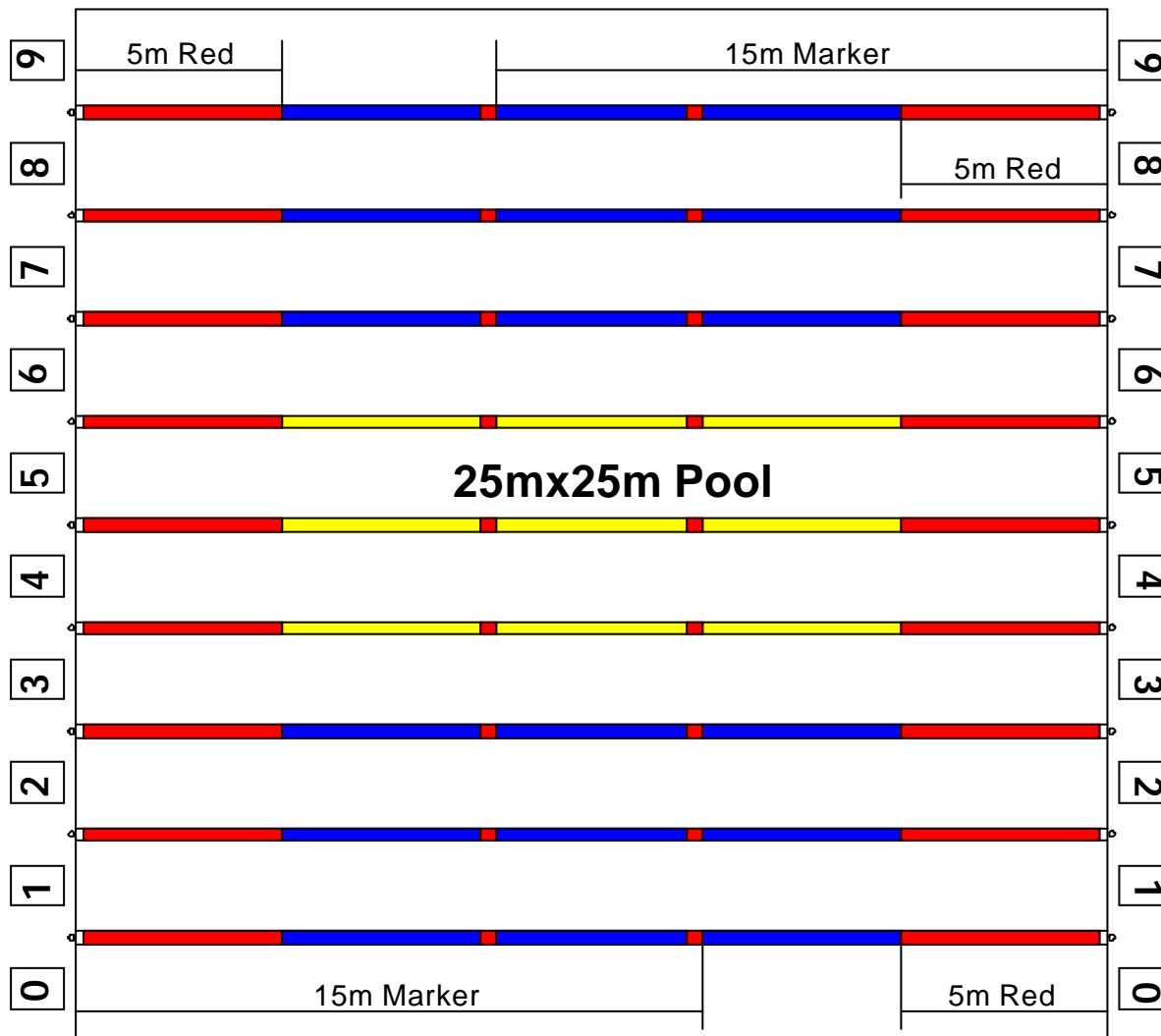
Scale No

Patents

2001285610;7100219;4048677;01818714.5 & 2003/2920 e.g.

Anti Wave Swimming Lane

Open Drawing



Anti Wave Standard Color for 25m Fina Pool



PROPRIETARY AND CONFIDENTIAL
The information contained in this drawing is the sole property of ANTI WAVE, any reproduction in part or as a whole without the written permission of ANTI WAVE is prohibited.

Project Name:
Swimming Lane

Product Name:
Standard Color for
25m Fina Pool

Project No. AWE00130

Product No. 10

Drawn Date 2007-04-26

Verify Date

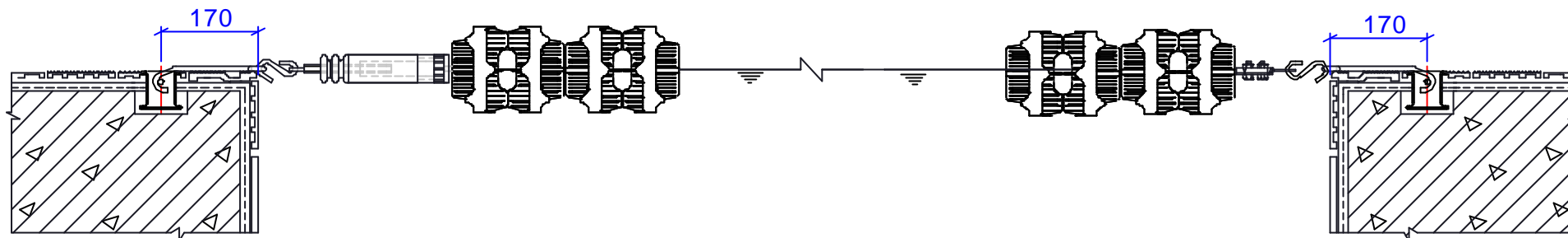
©ANTI WAVE 2007

Drawn Philip Scale No Patents 2001285610;7100219;4048677;01818714.5 & 2003/2920 e.g.

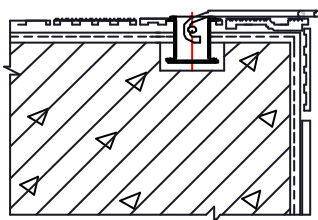
Anti Wave Swimming Lane

Open Drawing

General Sketch

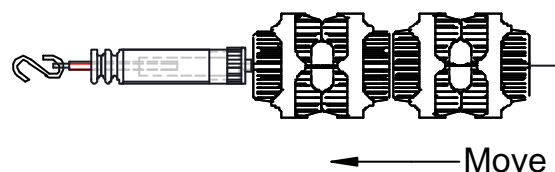


Step 1



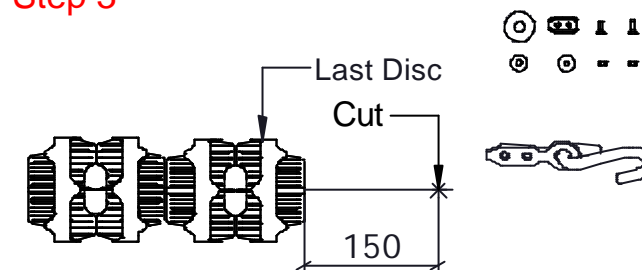
Install Lane Anchors correctly in the Pool Wall and wait one week before stressing them, hitch the Long Hooks to the Lane Anchor when you want to install the Lanes.

Step 2



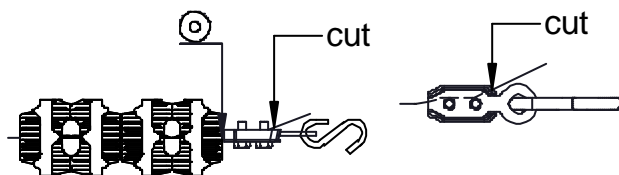
Open the Lane package, take the Super Tensioner's side and move all Discs and Floats to this side tightly.

Step 3



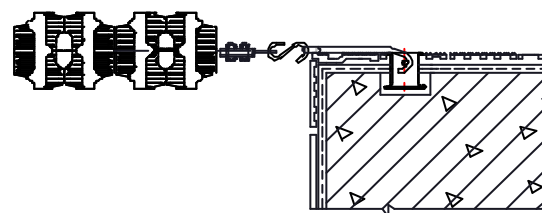
Cut the Stainless Steel Cable as above drawing, then uninstall the Long Clamp.

Step 4



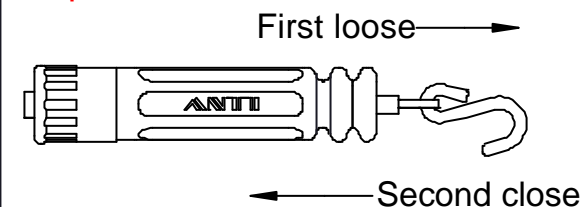
Fix the S Hook to the Stainless Steel Cable as above drawing, then use the Washers and Nuts to screw them, then cut the extra Cable. Note: do not forget the Washer attached the last Discs.

Step 5



Hitch the S Hooks to the Lane Anchor, then take the Lane to the another side of the pool.

Step 6



Loose the long bolt of Super Tensioner, hitch the S Hooks to the another said of the pool, then close the long bolt, so finished all the Lane's assembly.

anti
©ANTI WAVE 2007

PROPRIETARY AND CONFIDENTIAL
The information contained in this drawing is the sole property of ANTI WAVE, any reproduction in part or as a whole without the written permission of ANTI WAVE is prohibited.

Project Name:

Swimming Lane

Product Name:

Lane Assembly
Instruction

Project No. AWE00130

Product No. 11

Drawn Date 2007-04-26

Verify Date

Drawn Philip

Scale No

Patents

2001285610;7100219;4048677;01818714.5 & 2003/2920 e.g.