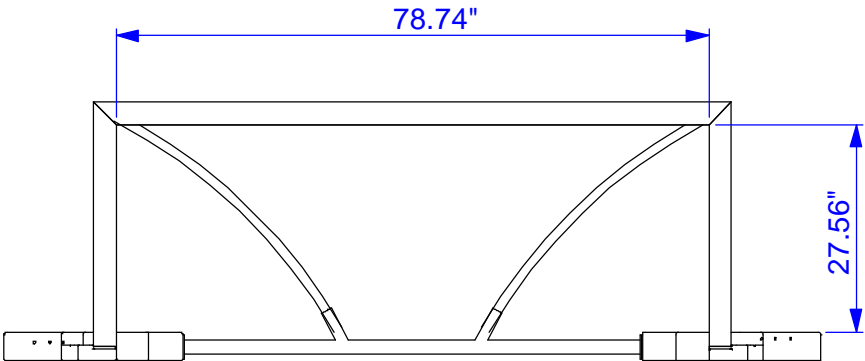
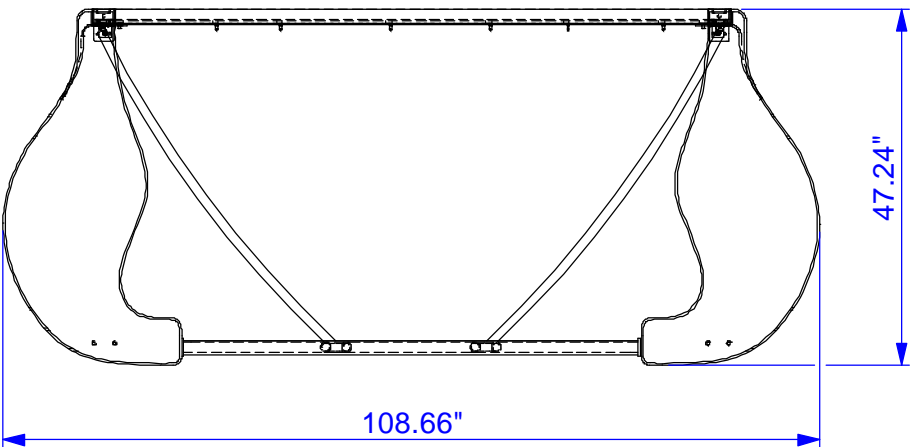
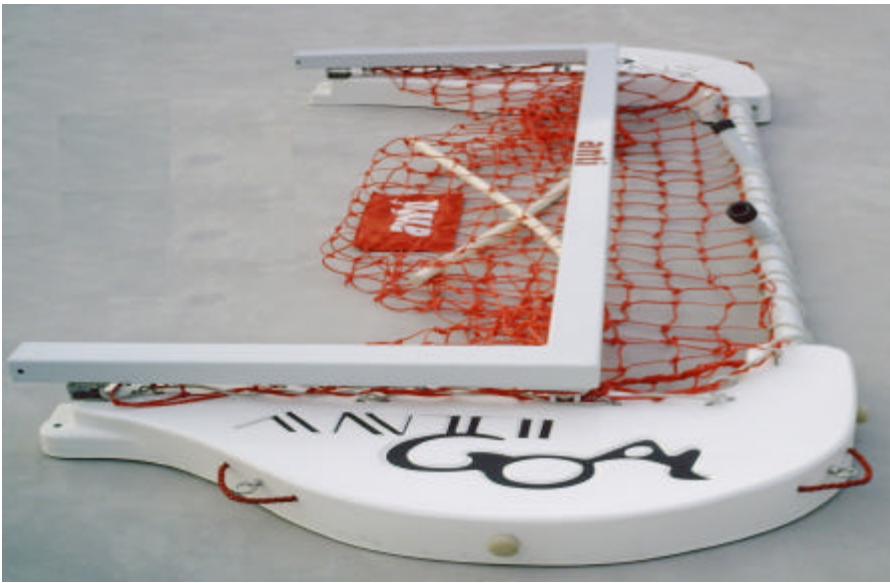


Anti Wave Flippa Folding Goal

Position a: Play



Position b: Folded

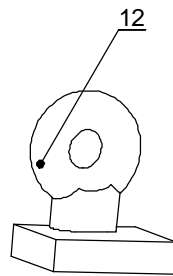
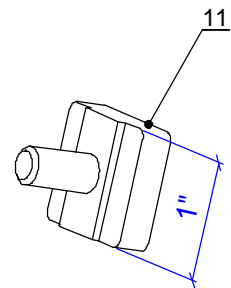
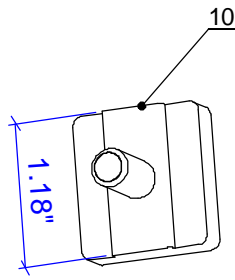
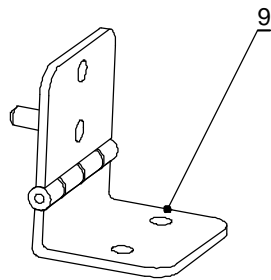
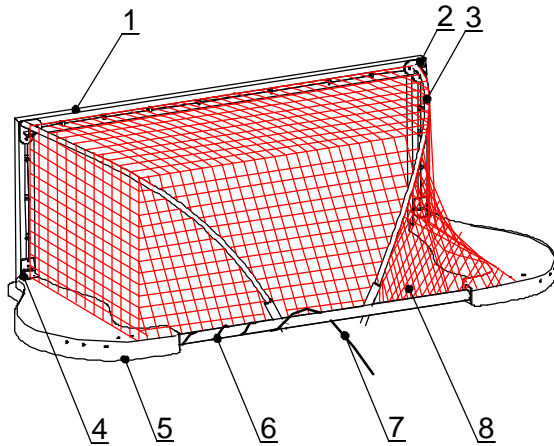


PROPRIETARY AND CONFIDENTIAL
The information contained in this drawing is the sole property of ANTI WAVE, any reproduction in part or as a whole without the written permission of ANTI WAVE is prohibited.

Project Name:				Product Name:				Project No.	AWE00470	Product No.	01
Flippa Folding Goal				Flippa Folding Goal				Drawn Date	2006-09-15	Verify Date	2006-09-23
Drawn	Philip	Scale	No	Patent	4048677	Revise Date		Verify Date			

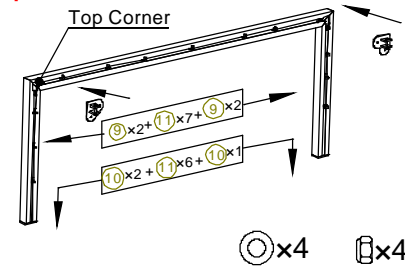
Anti Wave Flippa Folding Goal

General Sketch



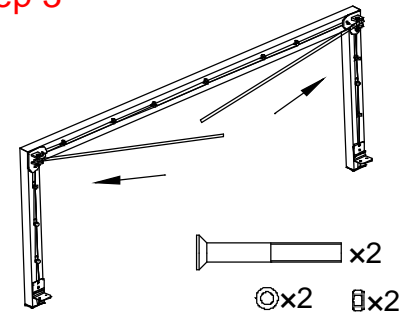
No.	Name	Qty
①	Front frame	1
②	Aluminium Heart Casting	2
③	Plastic Tube	2
④	SS Hinge	2
⑤	Small GRP Float	2
⑥	Aluminium Back Tube	1
⑦	White Rope	1
⑧	Red Net	1
⑨	SS Hinge	2
⑩	Big M8x30 Slide Block	4
⑪	Small M8x30 Slide Block	4
⑫	Eyelets	13
⑬	M8x30 Round Head Bolt	4
⑭	M8x55 Countersunk Bolt	2
⑮	M8 Lock Nut and Washer	20
⑯	M8 Eye Bolt	4

Step 1



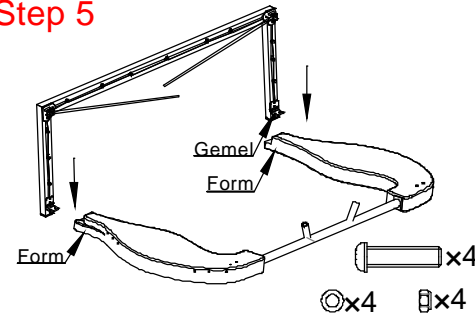
Open the Parts Bag, take out Slide Blocks and Eyelets, Slide them as above from top corner of Front Frame, then use Big Slide Block, Washer and Lock Nut to fix the Heart casting to Front Frame.

Step 3



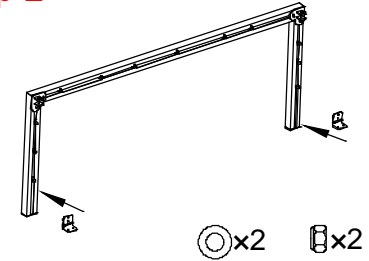
Insert the Plastic Tube into the Alu plate of the Heart Casting, use M8x55 Countersunk Bolts, Washers and Lock Nuts to fix the Plastic Tube to the Front Frame.

Step 5



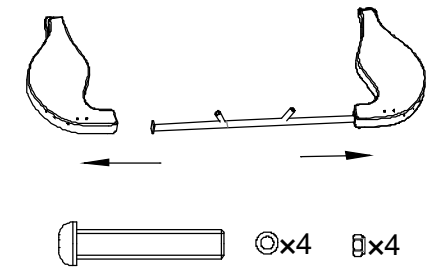
Take off the Foams in the front of GRP Floats, use M8x30 Round Head Bolts, Washers and Lock Nuts to fix the Floats to the Front Frame. Donot forget to fix the Foams again.

Step 2



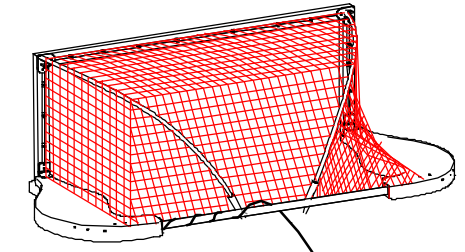
Insert the SS Sticks of SS Hingeto the holes of the Front Frame, use small Slide Blocks, M8 Lock Nuts and Washers to fix the SS Hinge to the Front Frame. Note that the bolts crewed not tight.

Step 4



Use the M8x40 Round Head Bolts, Washers and Lock Nuts to fix the Small GRP Floats to the Back Tube.

Step 6



Use White Rope to fix the Red Net to the Alu Eyelets and SS Saddles of GRP Floats, lace it around the Back Tube.